

Floor-Standing High-speed Refrigerated Centrifuge LX-210L750R

Scope of Application :

Haier Biomedical LX-210L750R is a floor-standing high-speed refrigerated centrifuge features with 3L capacity and performance up to 47,400 xg, which is ideal for all-purpose use in the industrial and research sectors.

It also serves as IVD laboratory equipment when used with IVD tubes and diagnostic analysis systems, separating human blood for hematological, immunological, and cardiovascular diagnostic tests.



Qingdao Haier Biomedical Co., Ltd.

No.280 Feng Yuan Road, High-tech Zone,
Qingdao, 266111, P.R. China
E-mail: inquiry@haierbiomedical.com
Website: www.haiermedical.com
Mar, 2026



Haier Biomedical



Haier Biomedical
International



Haier Biomedical
International



Haier Biomedical
International



Haier Biomedical
International



Excellent Performance



Offering a broad portfolio of fixed-angle and swing-out rotors, which can accommodate tubes and bottles from 1.5 ml to 750 ml, as well as deep-well plates



Automatic radio-frequency rotor identification (RFID) that enables immediate identification of a rotor once it is securely placed in the centrifuge chamber, avoid over-speed, reduce error messages, and enhance the safety



Low center of gravity design, amplitude less than 0.02mm, ensuring stable operation and good centrifugal effect



Optimized multi-layer shock absorption technology makes the sound level ≤ 56 (dB(A))



High-strength, aero-aluminum rotor, which is acid and alkali corrosion-resistant, greatly increases the service life, and allows for 50,000 uses



Use of brushless induction motors to provide maintenance-free operation, eliminating carbon particle emissions

Ergonomic Design



Dual self-lock design to ensure safe operation



Dual gas springs with safety protection



4 universal casters and 4 levelling feet allows for easy movement and locks safely into place



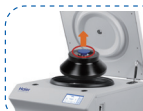
316 stainless steel centrifuge chamber is rust-free and easy to clean



USB port for exporting operation record including speed, time and temperature, operation curve with alarm messages etc.



Triple-layer construction to ensure safe use



Patented tool-free rotor exchange technology enables the installation and removal of rotors on the centrifuge automatically and securely without the need for an tools
Pull the handle to quickly remove and install the rotor

Intuitive Interface



The 7-inch 45° glove-friendly touchscreen, the wide viewing angle more comfortable and practical for users of all heights



Easily monitor the display of set and actual run conditions with enlarged track bar during the run for clear visibility, which ensures the operator can see them from a distance



The speed, centrifugal force, time and temperature can be changed by user during the centrifugation process



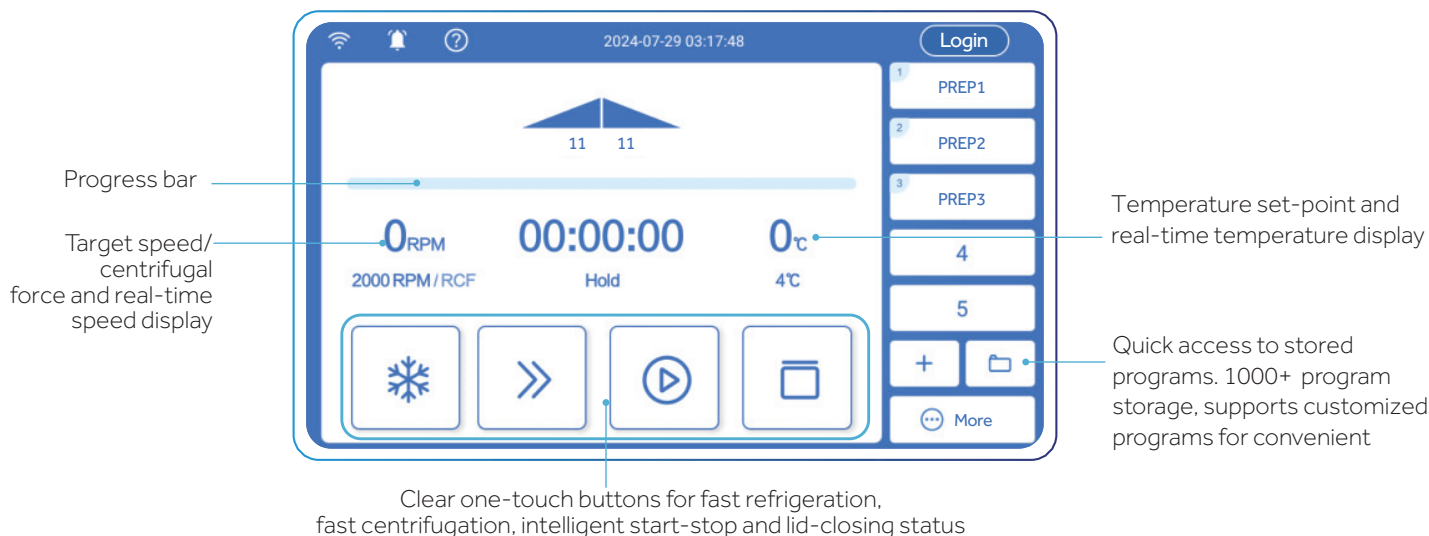
Further enhanced with access controls such as user login with password protection, the independent program data of each user is managed separately



Quick recall of up to 1000+ programs with alpha-numeric naming to minimize time between runs and for quick run start by routine users



11 acceleration + 12 deceleration stages



Enhanced Safety



Real time loading imbalance detection and intelligent lid locking monitoring, immediate shutdown protection in case of imbalance or lid opening



Adopting $\Phi 80$ mm adjustable feet for more stable installation



Multiple alarm including abnormal voltage alarm, high temperature alarm, overspeed alarm, load imbalance alarm, rotor absent alarm, brake abnormal alarm, rotor life reminder alarm, and other alarm functions



Fully covered steel plate protective sleeve and 12mm steel shell

Specifications

Model	LX-210L750R
Max Capacity	4*750ml
Speed Range (rpm)	500-21,000
Max RCF (xg)	47,400
Speed Accuracy (rpm)	±10
Time Setting Range	1min~99h59m59s(1-second increment)
Precooling Function	Yes
Temperature Setting Range (°C)	-20~40, adjustable to 1
Display	7 inch touch screen
Noise (dB(A))	≤56
Power Supply (V/Hz)	220-240/50/60
Power (W)	3400
Exterior Dimensions (W*D*H)(mm)	740*920*990
Lid Opening Height (mm)	1720
Net Weight (kg)	375
Packing Dimensions (W*D*H)(mm)	940*1150*1270
Gross Weight (kg)	470
Certification	CE



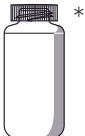




Fixed-angle Rotor



BE No.	BE12DM001
Type	Carbon fiber, Sealed
Max. Capacity (ml)	4*1000
Max RCF (xg)	16,902
Max Speed (rpm)	9,400

Adapter(Sets of 6) for BE12DM001



BE No.	No adapter needed	BE12JP002	BE12JQ002	BE12JR002	BE12JS002
Max Capacity	1000ml	500ml	250ml	6*50ml	5*50ml
Tubes Per Adapter/Rotor	4	1/4	1/4	6/24	5/20
Tube	 *				
Max Tube Dimensions (Ø x L mm)	97.5*195	69.5*170	62*123	29*105	29*118
Tube Type	Flat bottom	Flat bottom	Flat bottom	Round bottom	Conical bottom

*Haier Biomedical offers 1000ml centrifuge bottles(sets of 6) - BE12K1000





Fixed-angle Rotor



BE No.	BE12D0001
Type	Sealed
Max Capacity	6*500ml
Max RCF (xg)	17,778
Max Speed (rpm)	10,000

Adapter(Sets of 6) for BE12D0001



BE No.	No adapter needed	BE12JT002	BE12JU002	BE12JV002	BE12JW002	BE12JX002	BE12JY002	BE12JZ002	BE12J0003	BE12J1003
Max Capacity	500ml	250ml	100ml	2*50ml	2*50ml	4*30ml	7*15ml	8*10ml	10*5ml	14*1.5/2ml
Tubes Per Adapter/Rotor	6	1/6	1/6	2/12	2/12	4/24	7/42	8/48	10/60	14/84
Tube										
Max Tube Dimensions (Ø x L mm)	69.5*170	62*123	38*120	29*105	29*120	25*102	17*121	16*82	13*54	11*38
Tube Type	Flat bottom	Flat bottom	Round bottom	Round bottom	Conical bottom	Round bottom	Conical bottom	Round bottom	Round bottom	Conical /Round bottom



BE No.	BE12D1001
Type	Sealed
Max Capacity	6*250ml
Max RCF (xg)	25,115
Max Speed (rpm)	12,000



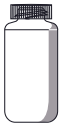
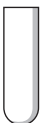
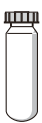


Fixed-angle Rotor



BE No.	BE12D5001
Type	Sealed
Max Capacity	4*250ml
Max RCF (xg)	29,440
Max Speed (rpm)	14,000

Adapter(Sets of 6) for BE12D1001, BE12D5001



BE No.	No adapter needed	BE12JF003	BE12JG003	BE12JH003	BE12JJ003
Max Capacity	250ml	100ml	50ml	50ml	5*15ml
Tubes per adapter/rotor (BE12D1001)	6	1/6	1/6	1/6	5/30
Tubes per adapter/rotor (BE12D5001)	4	1/4	1/4	1/4	5/20
Tube					
Max Tube Dimensions (Ø x L mm)	62*123	38*120	29*105	29*120	17*121
Tube Type	Flat bottom	Round bottom	Round bottom	Conical bottom	Conical bottom



Fixed-angle Rotor



BE No.	BE12D4001
Type	Sealed
Max Capacity	10*100ml
Max RCF (xg)	21,280
Max Speed (rpm)	12,000

Adapter(Sets of 10) for BE12D4001



BE No.	No adapter needed	BE12JS003	BE12JR003	BE12JQ003	BE12JN003	BE12JP003	BE12JT003
Max Capacity	100ml	50ml	50ml	25ml	15ml	15ml	2*10ml
Tubes Per Adapter/Rotor	10	1/10	1/10	1/10	1/10	1/10	2/20
Tube							
Max Tube Dimensions (Ø x L mm)	38*120	29*105	29*120	22*110	17*121	17*121	16*82
Tube Type	Round bottom	Round bottom	Conical bottom	Round bottom	Round bottom	Conical bottom	Round bottom



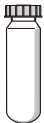
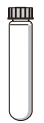
Fixed-angle Rotor



BE No.	BE12D7001
Type	Sealed
Max Capacity	8*50ml
Max RCF (xg)	38,460
Max Speed (rpm)	18,000

Adapter(Sets of 8) for BE12D7001



BE No.	No adapter needed	BE12JK003
Max Capacity (ml)	50	15
Tubes Per Adapter/Rotor	1/8	1/8
Tube		
Max Tube Dimensions(Ø x L mm)	29*105	17*121
Tube Type	Round bottom	Round bottom



Fixed-angle Rotor



BE No.	BE12D6001
Type	Sealed, round bottom
Max Capacity	6*50ml
Max RCF (xg)	44,800
Max Speed (rpm)	20,000

Adapter(Sets of 6) for BE12D6001



BE No.	No adapter needed	BE12JM003	BE12JL003
Max Capacity (ml)	50	30	15
Tubes Per Adapter/Rotor	1/6	1/6	1/6
Tube			
Max Tube Dimensions (Ø x L mm)	29*105	25*102	17*121
Tube Type	Round bottom	Round bottom	Round bottom



BE No.	BE12D8001
Type	Sealed, conical bottom
Max Capacity	6*50ml
Max RCF (xg)	44,800
Max Speed (rpm)	20,000

Adapter(Sets of 6) for BE12D8001



BE No.	No adapter needed	BE12JC002
Max Capacity (ml)	50	15
Tubes Per Adapter/Rotor	1/6	1/6
Tube		
Max Tube Dimensions (Ø x L mm)	29*120	17*121
Tube Type	Conical bottom	Conical bottom



Fixed-angle Rotor



BE No.	BE12D3001
Type	Sealed
Max Capacity	12*15ml
Max RCF (xg)	28,618
Max Speed (rpm)	16,000



Tube for BE12D3001

Max Tube Capacity (ml)	15
Tubes per Rotor	12
Max Tube Dimensions (Ø x L mm)	17*121
Tube Type	Conical bottom



BE No.	BE12D2001
Type	Sealed
Max Capacity	16*10ml
Max RCF (xg)	47,400
Max Speed (rpm)	21,000



Tube for BE12D2001

Max Tube Capacity (ml)	10
Tubes per Rotor	16
Max Tube Dimensions (Ø x L mm)	16*82
Tube Type	Round bottom



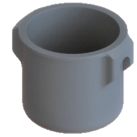
Swing-out Rotor



Swing-out Rotor Block



Round Bucket (Sets of 4)



BE No. BE12FS001

Max. RCF (xg) 3,488

Max. speed (rpm) 4,000



BE No. BE12G5000

Max. RCF (xg) 3,488

Max. speed (rpm) 4,000

Max Capacity (ml) 750

Bucket Type Flat bottom

Adapter (Sets of 4) for BE12G5000



BE No.	No adapter needed	BE12J3003	BE12J4003	BE12J5003	BE12J6003	BE12J7003	BE12J8003	BE12J9003	BE12JA003
Max Capacity	750ml	500ml	250ml	4*100ml	7*50ml	16*15ml	23*10ml	31*5/7ml	56*1.5/2ml
Tubes Per Adapter/Rotor	4	1/4	1/4	4/16	7/28	16/64	23/92	31/124	56/224
Tube									
Max Tube Dimensions (Ø x L mm)	99*140	96*155	60*165	38*120	29*118	17*121	16*106	13*75/106	11*38
Tube Type	Flat bottom	Conical bottom	Conical bottom	Round bottom	Conical bottom	Conical bottom	Large blood collection tube (Ø16mm)	Short/long blood collection tube	Conical/Round bottom



Swing-out Rotor



Swing-out Rotor Block



Square Bucket (Sets of 4)



BE No.	BE12FS001
Max. RCF (xg)	3,488
Max. speed (rpm)	4,000



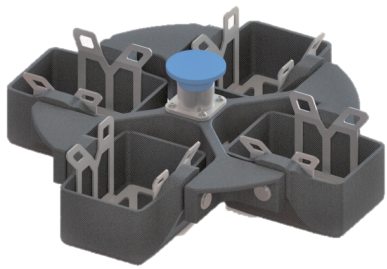
BE No.	BE12HB000
Max. RCF (xg)	3,488
Max. speed (rpm)	4,000
Max Capacity	-
Bucket Type	Flat bottom

Adapter (Sets of 4) for BE12HB000



BE No.	BE12JB003	BE12JC003	BE12JD003	BE12JE003
Max Capacity	9*50ml	20*15ml	30*10ml	39*5/7ml
Tubes Per Adapter/Rotor	9/36	20/80	30/120	39/156
Tube				
Maximum Tube Dimensions (Ø x L mm)	29*118	17*121	16*106	13*75/106
Tube Type	Conical bottom	Conical bottom	Large blood collection tube (Ø16mm)	Short/long blood collection tube

 **Swing-out Rotor**



Swing-out Rotor Block



BE No.	BE12FS001
Max. RCF (xg)	3,488
Max. speed (rpm)	4,000

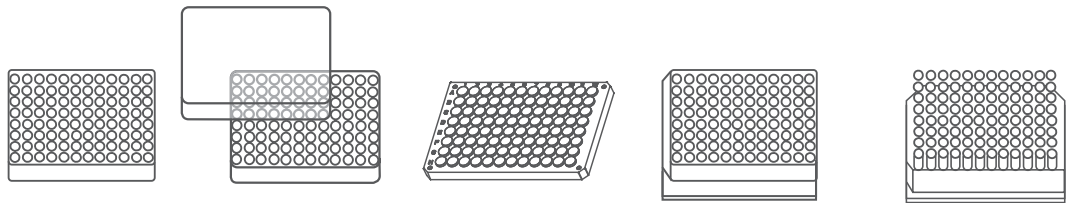


Rectangular Bucket (Sets of 4)



BE No.	BE12HC000
Max. RCF (xg)	3,148
Max. speed (rpm)	4,000
Max Capacity	-
Bucket Type	Rectangular bottom Max height 60mm

Plates for BE12HC000



Plates per bucket/rotor	4/16	3/12	3/12	1/4	1/4
W*D*H (mm)	128*86*15	128*86*17.5	128*86*20	128*86*44.5	128*86*60
Plate Type	MTP (without lid)	MTP (with lid)	PCR plate 96-fold	DWP	Filter plate

