

Benchtop Low-Speed Refrigerated Centrifuge LX-60T750R



Scope of Application :

With a variety of large-capacity rotors, it can meet the needs of clinical biochemistry, molecular biology, cell culture and other large-throughput sample processing, and is widely used in medical, scientific research, pharmaceutical and other fields.

It also serves as IVD laboratory equipment when used with IVD tubes and diagnostic analysis systems, separating human blood for hematological, immunological, and cardiovascular diagnostic tests.



Short pre-cooling time and precise temperature control performance



Wide range of rotors for application flexibility, compatible with tubes/bottles from 0.2 ml to 750ml



Real time loading imbalance detection, immediate shutdown protection in case of imbalance

Qingdao Haier Biomedical Co., Ltd.

No.280 Feng Yuan Road, High-tech Zone,
Qingdao, 266111, P.R. China
E-mail: inquiry@haierbiomedical.com
Website: www.haiermedical.com
Mar, 2026



Haier Biomedical



Haier Biomedical
International



Haier Biomedical
International



Haier Biomedical
International



Haier Biomedical
International



Product Features



Short pre-cooling time and precise temperature control performance



Wide range of rotors for application flexibility, compatible with tubes/bottles from 0.2 ml to 750ml



Use of brushless induction motors to provide maintenance-free operation, eliminating carbon particle emissions



Optimized sound design for low noise levels ($\leq 59\text{dB(A)}$)



Automatic rotor identification and rotor life monitoring for maximum operational safety



Real time loading imbalance detection, immediate shutdown protection in case of imbalance



Only 35 seconds to rise to the maximum speed under full load of 4*750ml



Low center of gravity design, amplitude less than 0.06mm, ensuring stable operation and good centrifugal effect

Intuitive Interface



The 7-inch 45° glove-friendly touchscreen, the wide viewing angle more comfortable and practical for users of all heights



Further enhanced with access controls such as user login with password protection, the independent program data of each user is managed separately



Quick recall of up to 1000+ programs with alpha-numeric naming to minimize time between runs and for quick run start by routine users



The speed, centrifugal force, time and temperature can be changed by user during the centrifugation process



9 acceleration + 10 deceleration stages

The screenshot shows a user interface with the following elements:

- Top Bar:** Status icons (Wi-Fi, alarm, help), time (3:46 PM), date (13 Dec 2023), and user status (Visitor, Login).
- Control Panel:** A central display showing '0 RPM', '00:00:00', and '23°C'. Below this, it shows '6000 RPM / RCF' and a checkmark next to '00:20:00'. A temperature set-point of '4°C' is also visible.
- Buttons:** A row of four large buttons: a snowflake icon for refrigeration, a double arrow for fast centrifugation, a play button for start, and a lid icon for lid-closing status.
- Program List:** A vertical list of program buttons numbered 1 through 5, with a '+' button and a 'More' button at the bottom.

Annotations point to specific features:

- Acceleration/Deceleration rates:** Points to the '9 9' indicator at the top of the control panel.
- Target speed/centrifugal force and real-time speed display:** Points to the '0 RPM' and '6000 RPM / RCF' display.
- Temperature set-point and real-time temperature display:** Points to the '23°C' and '4°C' displays.
- Quick access to stored programs:** Points to the numbered program buttons (1-5).
- Clear one-touch buttons:** Points to the snowflake, double arrow, play, and lid buttons.



Product Parts



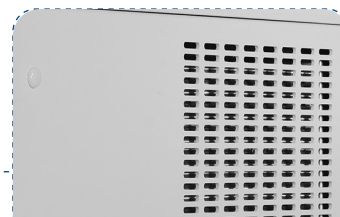
Intelligent lid locking monitoring and dual automatic self-locking to ensure safe operation



Dual gas springs with safety protection



Drainage tray to prevent internal water accumulation and improve corrosion resistance



Triple-layer construction to ensure safe use



316 stainless steel centrifuge chamber is rust-free and easy to clean



USB port for exporting operation record including speed, time and temperature, operation curve with alarm messages etc



Key Features of Quick-Flip Biocontainment Safety Lids

- ◎ **Quick-Flip Hinge Design**
Our hinged lids do not need to be removed from the rotor. Just a quick flip gives you fast access to your samples
- ◎ **Low-Pressure Closing Clip**
The simple low-pressure clip offers a secure closure with an audible "click" and visual cues, enhancing safety and replacing multi-turn screw caps or complex lever systems
- ◎ **Ambidextrous & Glove-Friendly**
Designed for ease of use, our lids can be operated with either hand and are glove-friendly, ensuring seamless operation
- ◎ **Premium Polymer Construction**
Made from Polyetherimide (PEI), our lids provide excellent chemical resistance, transparency, and durability
- ◎ **Certified Safety and Reliability**
Independently tested and certified per IEC-61010 Section 2-020 Annex AA, ensuring top-level safety and performance

Choose our Quick-Flip biocontainment safety lids for innovative, safe, and durable lab solutions.



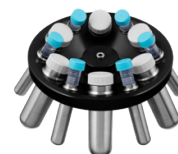



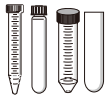
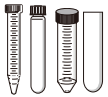
Specifications

Model	Maximum Capacity	Max Speed (rpm)	Max RCF(xg)	Speed Accuracy (rpm)	Time Setting Range	Precooling Function	Temperature Setting Range(°C)	Display
LX-60T750R	4*750ml	6,000	5,353	±10	1s ~ 99h59m59s (1-second increment)	Yes	-20 ~ 40, adjustable to 1	7 inch touch screen
Noise Level (dB(A))	Power Supply (V/Hz)	Power(W)	Exterior Dimensions (W*D*H)(mm)	Lid Opening Height (mm)	Net Weight (kg)	Packing Dimensions (W*D*H)(mm)	Gross Weight (kg)	Certifications
≤59	220-240/50/60	1600	680*715*375	860	115	820*800*580	140	CE



Fixed-Angle Rotor



BE No.	BE12DF000	BE12DG000	BE12D9001
Type	Steel sleeves	Steel sleeves	Steel sleeves
Max Capacity	42*15ml	12*50 (15)ml	6*50 (15)ml
Max RCF (xg)	4,472	4,640	5,353
Max Speed (rpm)	5,000	5,000	6,000
Tubes per Rotor	42	12pcs (50ml) 12pcs (15ml)	6pcs (50ml) 6pcs (15ml)
Tube			
Max Tube Capacity (ml)	15	50 (15)	50 (15)
Max Tube Dimension (Ø x L mm)	17*121	29*118 17*121	29*118 17*121
Tube Type	Round /Conical bottom	Round /Conical bottom	Round /Conical bottom



Swing-Out Rotor



Swing-Out Rotor Block



BE No.	BE12FN001
Max. RCF (xg)	3,488
Max. speed (rpm)	4,000



Round Bucket (Sets of 4)



BE No.	BE12G5000
Max Capacity (ml)	750
Bucket Type	Flat bottom

Adapter(Sets of 4) for BE12G5000



BE No.	No Adapter Needed	BE12J3003	BE12J4003	BE12J5003	BE12J6003	BE12J7003	BE12J8003	BE12J9003	BE12JA003
Max Capacity	750ml	500ml	250ml	4*100ml	7*50ml	16*15ml	23*10ml	31*5/7ml	1.5/2ml
Tubes per adapter /rotor	4	1/4	1/4	4/16	7/28	16/64	23/92	31/124	56/224
Tube									
Max Tube Dimensions (Ø x L mm)	99*140	96*155	60*165	38*120	29*118	17*121	16*106	13*75/106	11*38
Tube Type	Flat bottom	Conical bottom	Conical bottom	Round bottom	Conical bottom	Conical bottom	Large blood collection tube (Ø16mm)	Short/long blood collection tube	Round/Conical bottom



Swing-Out Rotor



Swing-Out Rotor Block



Round Bucket (Sets of 4)



BE No.	BE12FN001
Max. RCF (xg)	3,488
Max. speed (rpm)	4,000



BE No.	BE12HB000
Max Capacity	-
Bucket Type	Flat bottom

Adapter (Sets of 4) for BE12HB000



BE No.	BE12JB003	BE12JC003	BE12JD003	BE12JE003
Max Capacity	9*50ml	20*15ml	30*10ml	39*5/7ml
Tubes Per Adapter/Rotor	9/36	20/80	30/120	39/156
Tube				
Max Tube Dimensions (Ø x L mm)	29*118	17*121	16*106	13*75/106
Tube Type	Conical bottom	Conical bottom	Large blood collection tube (Ø16mm)	Short/long blood collection tube



Swing-Out Rotor Block



Round Bucket (Sets of 4)

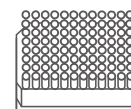
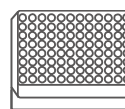
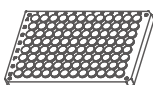
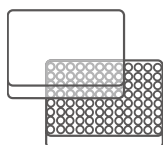
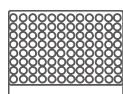


BE No.	BE12FN001
Max. RCF (xg)	3,148
Max. speed (rpm)	4,000



BE No.	BE12HC000
Max Capacity	-
Bucket Type	Rectangular bottom Max height 60mm

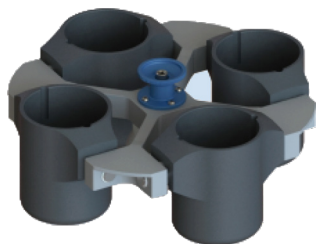
Plates for BE12HC000



Plates per bucket/rotor	4/16	3/12	3/12	1/4	1/4
W*D*H (mm)	128*86*15	128*86*17.5	128*86*20	128*86*44.5	128*86*60
Plate Type	MTP (without lid)	MTP (with lid)	PCR plate 96-fold	DWP	Filter plate



Swing-Out Rotor



Swing-Out Rotor with Round Buckets

Swing-Out Rotor Block



BE No.	BE12FJ001
Max. RCF (xg)	3,184
Max. speed (rpm)	4,000



Round Bucket (Sets of 4)



BE No.	BE12G0000	
Max Capacity (ml)	500	
Bucket Type	Flat bottom	



Swing-Out Rotor with Biocontainment Round Buckets

Swing-Out Rotor Block



BE No.	BE12FJ001
Max. RCF (xg)	3,184
Max. speed (rpm)	4,000



Round Bucket & Lid (Sets of 4)



BE No.	BE12G8000	BE12J2004
Max Capacity (ml)	500	NA
Bucket Type	Flat bottom	NA

Adapter (Sets of 4) for BE12G0000, BE12G8000



BE No.	No Adapter Needed	BE12JP001	BE12FG001	BE12FF001	BE12JS001
Max Capacity	500ml	250ml	225ml	100ml	4*50ml
Tubes Per Adapter/Rotor	4	1/4	1/4	1/4	4/16
Tube					
Max Tube Dimensions (Ø x L mm)	80*136	62*123	60*136	38*120	29*118
Tube Type	Flat bottom	Flat bottom	Conical bottom	Round bottom	Conical bottom



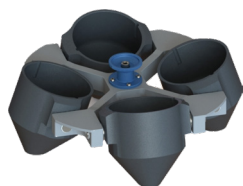
Swing-Out Rotor

Adapter (Sets of 4)
for BE12G0000, BE12G8000



BE No.	BE12JR001	BE12JQ001	BE12JD002	BE12JE002
Max Capacity	10*15ml	14*10ml	19*7/5ml	30*1.5/2ml
Tubes Per Adapter/Rotor	10/40	14/56	19/76	30/120
Tube				
Maximum Tube Dimensions (Ø x L mm)	17*121	16*106	13*75/106	11*38
Tube Type	Conical bottom	Large blood collection tube (Ø16mm)	Short/long blood collection tube	Round/Conical bottom

*Haier Biomedical also can provide 0.2ml adapter (sets of 24) (BE12J2003), 0.5ml adapter (sets of 24) (BE12JN002) for 1.5/2ml tube rotor



Swing-Out Rotor with Conical Buckets

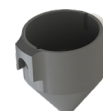
Swing-Out Rotor Block



BE No.	BE12FJ001
Max. RCF (xg)	3,506
Max. speed (rpm)	4,000



Conical Bucket (Sets of 4)



BE No.	BE12G1000
Max Capacity (ml)	500
Bucket Type	Conical bottom

Adapter (Sets of 4)
for BE12G1000



BE No.	No adapter needed	BE12JB002
Max Capacity (ml)	500	250
Tubes Per Adapter/Rotor	4	1/4
Tube		
Max Tube Dimensions (Ø x L mm)	96*150	60*165
Tube Type	Conical bottom	Conical bottom



Swing-Out Rotor with Plate Buckets

Swing-Out Rotor Block



BE No.	BE12FJ001
Max. RCF (xg)	2,612
Max. speed (rpm)	4,000

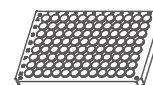
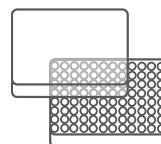
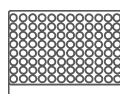


Plate Bucket (Sets of 4)



BE No.	BE12H5000
Max Capacity	1 plate
Bucket Type	Rectangular bottom

Plates for BE12H5000



Plates per bucket/rotor	4	4	4
W*D*H (mm)	128*86*15	128*86*17.5	128*86*20
Plate Type	MTP (without lid)	MTP (with lid)	PCR plate 96-fold