

# Benchtop General-Purpose Refrigerated Centrifuge



## LX-155T750R

It is a high-performance benchtop refrigerated centrifuge engineered for medium- to high-throughput workflows, offering exceptional versatility with support for tube sizes ranging from 0.2 mL microtubes to 750 mL bottles.

Ideal for a wide range of applications including cell culture processing, protein purification, and clinical sample preparation.

It also serves as IVD laboratory equipment when used with IVD tubes and diagnostic analysis systems, separating human blood for hematological, immunological, and cardiovascular diagnostic tests.

### Qingdao Haier Biomedical Co., Ltd.

No.280 Feng Yuan Road, High-tech Zone,  
Qingdao, 266111, P.R. China  
E-mail: [inquiry@haierbiomedical.com](mailto:inquiry@haierbiomedical.com)  
Website: [www.haiermedical.com](http://www.haiermedical.com)



Mar, 2026



Haier Biomedical



Haier Biomedical  
International



Haier Biomedical  
International



Haier Biomedical  
International



Haier Biomedical  
International

## Product Features



Offering a broad portfolio of fixed-angle and swing-out rotors, which can accommodate tubes and bottles from 1.5 ml to 750 ml, as well as deep-well plates



High-efficiency centrifugation delivers a remarkable 98% sample yield and reaches max speed in just 45 seconds



Rapid cooling and precise temperature control maximize productivity by significantly reducing experimental time



Optimized sound design for low noise levels ( $\leq 59\text{dB(A)}$ )



Use of brushless induction motors to provide maintenance-free operation, eliminating carbon particle emissions



RFID rotor identification locks the maximum speed to prevent overspeed operation

## Intuitive Interface

- The 7-inch glove-friendly touchscreen, combined with a wide viewing angle, makes operation more comfortable and practical for users of all heights
- Equipped with user login and password protection, ensuring individualized program data management for each user
- Quick recall feature for over 1000+ programs, minimizing time between runs and facilitating quick starts for routine users
- The speed, centrifugal force, time, and temperature can be adjusted by the user during centrifugation
- 11 acceleration + 12 deceleration stages



## › Ergonomic Design

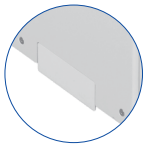
Intelligent lid locking monitoring and dual automatic self-locking to ensure safe operation



Dual gas spring design for safe and effort-saving door opening



Drainage tray is designed to prevent internal water accumulation and enhance corrosion resistance



316 stainless steel centrifuge chamber is rust-free and easy to clean



Triple-layer construction to ensure safe use



USB port enables easy export of operation records, such as speed, time, temperature, operation curves, and alarm messages.



## › Key Features of Quick-Flip Biocontainment Safety Lids

### ● Quick-Flip Hinge Design

Our hinged lids do not need to be removed from the rotor. Just a quick flip gives you fast access to your samples

### ● Low-Pressure Closing Clip

The simple low-pressure clip offers a secure closure with an audible "click" and visual cues, enhancing safety and replacing multi-turn screw caps or complex lever systems

### ● Ambidextrous & Glove-Friendly

Designed for ease of use, our lids can be operated with either hand and are glove-friendly, ensuring seamless operation

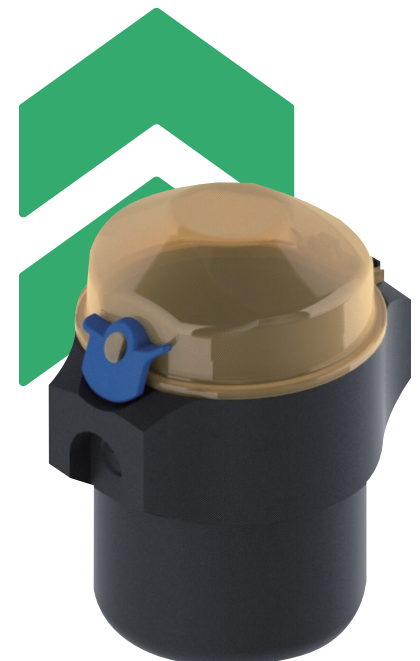
### ● Premium Polymer Construction

Made from Polyetherimide (PEI), our lids provide excellent chemical resistance, transparency, and durability

### ● Certified Safety and Reliability

Independently tested and certified per IEC-61010 Section 2-020 Annex AA, ensuring top-level safety and performance

Choose our Quick-Flip biocontainment safety lids for innovative, safe, and durable lab solutions.



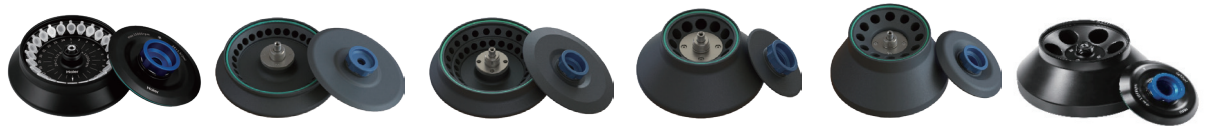
## Specifications

Model	Maximum Capacity	Speed Range (rpm)	Max RCF (xg)	Speed Accuracy (rpm)	Time Setting Range	Precooling Function	Temperature Setting Range (°C)	Display
LX-155T750R	4*750ml	500-15,500	26,322	±8	1s-99h59m59s (1-second increment)	Yes	-20-40, adjustable to 1	7 inch touch screen

Noise Level (dB(A))	Power Supply (V/Hz)	Power (W)	Exterior Dimensions (W*D*H)(mm)	Lid Opening Height (mm)	Net Weight (kg)	Packing Dimensions (W*D*H)(mm)	Gross Weight(kg)	Certifications
≤59	220-240/50/60	1600	680*715*375	877	115	820*800*580	140	CE

## Fixed-Angle Rotor



BE No.	BE12C9000	BE12CE000	BE12C7000	BE12DS000	BE12DT000	BE12DB000
Type	Sealed	Sealed	Sealed	Sealed	Sealed	Sealed
Max Capacity	24*1.5/2ml	30*1.5/2ml	48*1.5/2ml	12*10ml	12*15ml	6*50ml
Max RCF (xg)	23,100	26,322	22,132	16,071	21,912	16,421
Max Speed (rpm)	15,500	15,500	14,000	12,500	14,000	12,000
Max Tubes Per Rotor	24	30	48	12	12	6
Tube						
Max Tube Capacity (ml)	1.5/2ml	1.5/2ml	1.5/2ml	10ml	15ml	50ml
Max Tube Dimensions (Ø * L mm)	11*38	11*38	11*38	16*86	17*121	29*118
Tube Type	Round / Conical bottom	Round / Conical bottom	Round / Conical bottom	Round bottom	Conical bottom	Conical bottom

### Adapter (Sets of 6) for BE12DB000

BE No.	BE12JC002
Max Capacity (ml)	15
Tube	
Max Tube Dimensions (Ø x L mm)	17*121
Tube Type	Conical bottom





BE No.	BE12DU000	BE12E5000	BE12DF000	BE12DG000	BE12DE000
Type	Sealed	Sealed	Steel sleeves	Steel sleeves	Steel sleeves
Max Capacity	6*50ml	12*8*0.2ml	42*15ml	12*50(15)ml	10*100ml
Max RCF (kg)	17,065	14,892	4,472	4,640	3,350
Max Speed (rpm)	12,000	12,000	5,000	5,000	4,500
Max Tubes Per Rotor	6	12	42	12pcs(50ml) 12pcs(15ml)	10
Tube					
Max Tube Capacity (ml)	50	0.2	15	50(15)	100
Max Tube Dimensions (Ø * L mm)	29*105	6*18	17*121	29*118 17*121	41*120
Tube Type	Round bottom	PCR	Round/Conical bottom	Round/Conical bottom	Round bottom

BE No.	BE12DN001
Type	Sealed
Max Capacity	20*5ml
Max RCF (xg)	23,432
Max Speed (rpm)	13,500



Adapter (Sets of 20) for BE12DN001



BE No.	BE12JK004	BE12JJ004
Max Capacity	5ml	5ml
Tubes per adapter /rotor	1/20	1/20
Tube		
Max Tube Dimensions (Ø x L mm)	14*55	17*60
Tube Type	Round bottom	Conical bottom

BE No.	BE12DP001
Type	Sealed
Max Capacity	6*100ml
Max RCF (xg)	21,728
Max Speed (rpm)	13,000



Adapter (Sets of 6) for BE12DP001



BE No.	No adapter needed	BE12JC002
Max Capacity	100ml	85ml
Tubes per adapter /rotor	6	1/6
Tube		
Max Tube Dimensions (Ø x L mm)	38*124	38*121
Tube Type	Round bottom	Round bottom

## ► Swing-Out Rotor



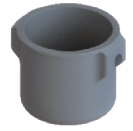
Swing-Out Rotor Block



BE No.	BE12FN001
Max. RCF (xg)	3,488
Max. speed (rpm)	4,000



Round Bucket (Sets of 4)



BE No.	BE12G5000
Max Capacity (ml)	750
Bucket Type	Flat bottom

Adapter (Sets of 4) for BE12G5000



BE No.	No Adapter Needed	BE12J3003	BE12J4003	BE12J5003	BE12J6003	BE12J7003	BE12J8003	BE12J9003	BE12JA003
Max Capacity	750ml	500ml	250ml	4*100ml	7*50ml	16*15ml	23*10ml	31*5/7ml	56*1.5/2ml
Tubes per adapter /rotor	4	1/4	1/4	4/16	7/28	16/64	23/92	31/124	56/224
Tube									
Max Tube Dimensions (Ø * L mm)	99*140	96*155	60*165	38*120	29*118	17*121	16*106	13*75/106	11*38
Tube Type	Flat bottom	Conical bottom	Conical bottom	Round bottom	Conical bottom	Conical bottom	Large blood collection tube (Ø16mm)	Short/long blood collection tube	Round/Conical bottom



Swing-Out Rotor Block



BE No.	BE12FN001
Max. RCF (xg)	3,488
Max. speed (rpm)	4,000



Round Bucket (Sets of 4)



BE No.	BE12HB000
Max Capacity	-
Bucket Type	Flat bottom

Adapter(Sets of 4) for BE12HB000



BE No.	BE12JB003	BE12JC003	BE12JB003	BE12JD003
Max Capacity	9*50ml	20*15ml	30*10ml	39*5/7ml
Tubes per adapter /rotor	9/36	20/80	30/120	39/156
Tube				
Max Tube Dimensions (Ø * L mm)	29*118	17*121	16*106	13*75/106
Tube Type	Conical bottom	Conical bottom	Large blood collection tube (Ø16mm)	Short/long blood collection tube



Swing-Out Rotor Block



BE No.	BE12FN001
Max. RCF (xg)	3,148
Max. speed (rpm)	4,000

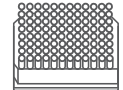
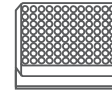
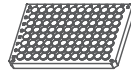
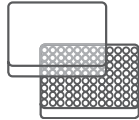
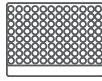
Round Bucket (Sets of 4)



BE No.	BE12HC000
Max Capacity	-
Bucket Type	Rectangular bottom Max height 60mm



Plates for BE12HC000



Plates per bucket/rotor	4/16	3/12	3/12	1/4	1/4
W*D*H (mm)	128*86*15	128*86*17.5	128*86*20	128*86*44.5	128*86*60
Plate Type	MTP (without lid)	MTP (with lid)	PCR plate 96-fold	DWP	Filter plate



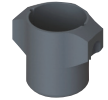
Swing-Out Rotor Block



BE No.	BE12FJ001
Max. RCF (xg)	3,184
Max. speed (rpm)	4,000



Round Bucket (Sets of 4)



BE No.	BE12G0000
Max Capacity (ml)	500
Bucket Type	Flat bottom



Swing-Out Rotor Block



BE No.	BE12FJ001
Max. RCF (xg)	3,184
Max. speed (rpm)	4,000



Round Bucket & Lid (Sets of 4)



BE No.	BE12G8000	BE12J2004
Max Capacity (ml)	500	NA
Bucket Type	Flat bottom	NA

Adapter (Sets of 4) for BE12G0000, BE12G8000



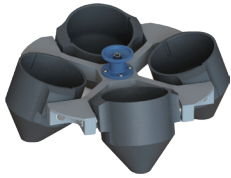
BE No.	No Adapter Needed	BE12JP001	BE12FG001	BE12FF001	BE12JS001
Max Capacity	500ml	250ml	225ml	100ml	4*50ml
Tubes per adapter /rotor	4	1/4	1/4	1/4	4/16
Tube					
Max Tube Dimensions (Ø * L mm)	80*136	62*123	60*136	38*120	29*118
Tube Type	Flat bottom	Flat bottom	Conical bottom	Round bottom	Conical bottom

Adapter (Sets of 4)  
for BE12G0000,  
BE12G8000



BE No.	BE12JR001	BE12JQ001	BE12JD002	BE12JE002
Max Capacity	10*15ml	14*10ml	19*7/5ml	30*1.5/2ml
Tubes per adapter /rotor	10/40	14/56	19/76	30/120
Tube				
Max Tube Dimensions (Ø * L mm)	17*121	16*106	13*75/106	11*38
Tube Type	Conical bottom	Large blood collection tube (Ø16mm)	Short/Long blood collection tube	Round/Conical bottom

\*Haier Biomedical also can provide 0.2ml adapter (sets of 24) (BE12J2003),0.5ml adapter (sets of 24) (BE12JN002) for 1.5/2ml tube rotor



Swing-Out Rotor  
with Conical Buckets

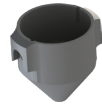
Swing-Out  
Rotor Block



BE No.	BE12FJ001
Max. RCF (xg)	3,506
Max. speed (rpm)	4,000



Conical Bucket  
(Sets of 4)

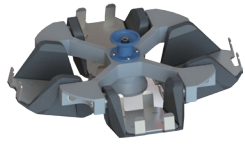


BE No.	BE12G1000
Max Capacity (ml)	500
Bucket Type	Conical bottom

Adapter (Sets of 4)  
for BE12G1000



BE No.	No adapter needed	BE12JB002
Max Capacity (ml)	500	250
Tubes Per Adapter/Rotor	4	1/4
Tube		
Max Tube Dimensions (Ø x L mm)	96*150	60*165
Tube Type	Conical bottom	Conical bottom



Swing-Out Rotor with Plate Buckets

Swing-Out Rotor Block



BE No.	BE12FJ001
Max. RCF (xg)	2,612
Max. speed (rpm)	4,000

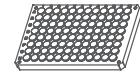
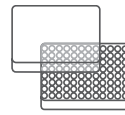
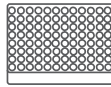


Round Bucket Lid (Sets of 4)



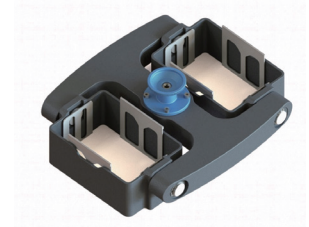
BE No.	BE12H5000
Max Capacity	1 plate
Bucket Type	Rectangular bottom

Plates for BE12H5000

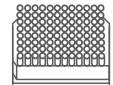
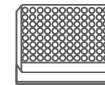
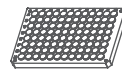
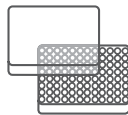


Plates per rotor	4	4	4
W*D*H (mm)	128*86*15	128*86*17.5	128*86*20
Plate Type	MTP (without lid)	MTP (with lid)	PCR plate 96-fold

BE No.	BE12FQZ01
Max. RCF (xg)	2,381
Max. Speed (rpm)	4,000
Max Capacity	-
Bucket Type	Rectangular bottom Max height 60mm



Plates for BE12FQZ01



Plates per rotor	4/8	3/6	3/6	1/2	1/2
W*D*H (mm)	128*86*15	128*86*17.5	128*86*20	128*86*44.5	128*86*60
Plate Type	MTP (without lid)	MTP (without lid)	PCR plate 96-fold	DWP	Filter plate